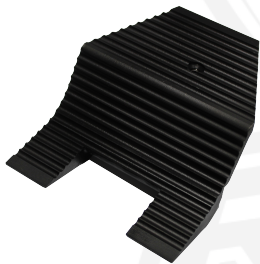




# ESLCC-24



|                             |  |           |
|-----------------------------|--|-----------|
| <b>LENGTH</b>               | 31.12 IN                                     | 790.57 MM |
| <b>HEIGHT</b>               | 11.74 IN                                     | 298.13 MM |
| <b>WIDTH</b>                | 10.50 IN                                     | 266.70 MM |
| <b>WEIGHT</b>               |  |           |
| <b>EXCL. BATTERY</b>        | 39.8 LBS                                     | 18.05 KG  |
| <b>BATTERY WEIGHT:</b>      |  |           |
| MILWAUKEE M18-9AH:          | 2.4 LBS                                      | 1.08 KG   |
| DEWALT 20/60V-9AH:          | 3.4 LBS                                      | 1.54 KG   |
| MAKITA 18V LXT-6AH          | 1.5 LBS                                      | 0.68 KG   |
| <b>MAX. BLADE OPENING</b>   | 9.12 IN                                      | 231.77 MM |
| <b>MAX. CUT REACH</b>       | 3 IN   | 76.20 MM  |
| <b>MAX. SPREAD DISTANCE</b> | 12 IN  | 304.8 MM  |
| <b>MAX. SPREAD FORCE</b>    | 11,880 LBF                                   | 5,288 KN  |
| <b>POWER SOURCE OPTION</b>  | MILWAUKEE M18, MAKITA LXT 18V AND DEWALT 20V |           |
| <b>IP RATING</b>            | 54   |           |



**BUILT TO BREACH**

